

Sealtite RLV

Rigid Low Viscosity Epoxy Resin

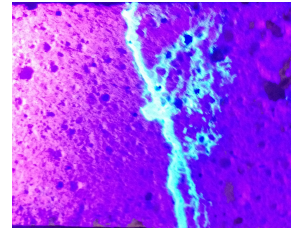


DESCRIPTION

Sealtite RLV is a rigid, transparent, low viscosity epoxy resin designed for fine cracks and honeycombs in concrete. Its very low viscosity allows for maximum penetration and it is suitable for cracks of 0.1mm or less.

Sealtite RLV is available with pot lives of either 30 or 120 minutes for use with CRG low pressure syringe injectors, medium pressure reinjectors or high pressure injection packers.

Sealtite RLV contains a UV-Visible tracer dye **Pat. pending** to aid in application and final inspection of any repairs.



Sealtite RLV's optional UV dye is clear under normal lighting conditions but clearly highlights micro-fractures when subjected to UV light.

ADVANTAGES

- 100% solids
- Contains a UV-Visible tracer dye for easier quality control and inspection
- Very low viscosity
- Variations in pot life available
- Low colour
- Penetrates airline cracks

USES

- Concrete crack injection
- Repairing delaminated screeds, tiles and timber flooring.

SPECIFICATION DATA at 23°C

Colour:	Transparent
Mix ratio A:B by volume:	2:1
Mixed viscosity:	80mPa·s
Pot life (150ml):	RLV-30: 30 minutes, RLV-120: 120 minutes
Tack free:	24 hours
Full cure:	7 days
Compressive strength:	89N/mm ²
Flexural strength:	85N/mm ²
Tensile strength:	65N/mm ²
Elongation:	2%
Solids:	100%
Storage:	Store between 5°C - 40°C away from direct sunlight
Shelf life:	12 months

DIRECTIONS FOR USE

- Premix both part A and B well before use.
- 2 component material: Add Part A to Part B at the ratio of 2:1 by volume and mix until homogeneous.
- Or dispense with a mechanical pump set at a 2:1 ratio.
- In large volumes the exothermic reaction will shorten the pot life.
- Minimum application temperature 5°C. Allow additional curing time at temperatures below 23°C.

SAFETY

Refer to the MSDS before use.

ADDITIONAL PRODUCTS

Cleaners

- *Sealtite Cleaner* - Non-flammable, low evaporation rate.
- *Cleaner 100* - Flammable, fast drying.

Accessories

- *Syringe injectors* - Surface mount, 50ml volume, max. pressure 9.1kgf, min. pressure 2.5kgf, refillable.
- *Packers* - High pressure injection, 6mm to 13mm diameters.
- *DP1* - Basic model single component resin injection pump.
- *DP2* - Heavy duty single component resin injection pump.

CRG

CRG Pty Ltd

www.crg.solutions

Disclaimer

This is not a specification, and all the information is given in good faith. Since conditions of use are beyond the control of the manufacturer, information contained herein is without warranty, implied or otherwise, and final determination of the suitability of any information or material for the use contemplated, the manner of use and whether there is any infringement of patents is the sole responsibility of the user. The manufacturer does not assume any liability in connection with the use of the product relative to coverage, performance or injury. For application in special conditions, consult the manufacturer for detailed recommendations.